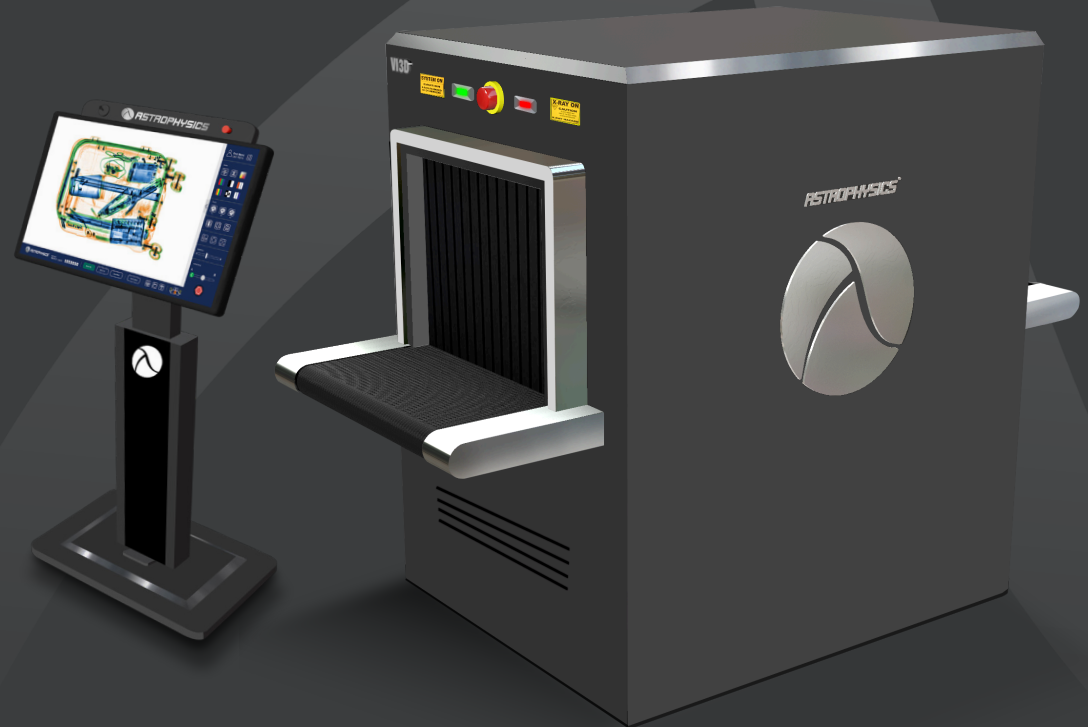




VI3D™

The VI3D™ is a new class of x-ray scanner. Our exclusive 3D MotionView™ software combines 3 angled views into a “rocking” image that reduces blind spots and enhances threat detection. The VI3D™ generates images with greater clarity, depth, and detail and allows operators to carry out quick, accurate inspections. With these 3 distinct viewpoints and a single generator, the VI3D™ is the only checkpoint system that delivers 3D imaging technology.

Proudly designed and assembled in the United States to the highest quality standards, the VI3D™ features a compact footprint ideal for diverse checkpoint deployment. With a Touchscreen Monitor, Adjustable Mobile Stand and chrome accents, the VI3D™ is a sleek security solution for premier high security sites. The Astrophysics VI3D™ delivers the ultimate in imaging detection technology and is the clear choice for next level security screening.



PRODUCT HIGHLIGHTS

3D MotionView™ Software

3 Distinct Views

Reduces Blind Spots

Touchscreen Monitor

Adjustable Mobile Stand

Compact Footprint

T O M O R R O W ' S T E C H N O L O G Y F O R T O D A Y ' S S E C U R I T Y™

GENERAL SPECIFICATIONS

| | |
|-------------------------------|--|
| Tunnel Size: | 60.0 cm x 42.0 cm (WxH) 23.6" x 16.5" |
| Dimensions: ¹ | 187.2 cm x 83.3 cm x 140.2 cm (LxWxH) 73.7" x 32.8" x 55.2" |
| Net Weight: ¹ | 796 kg (1754 lbs) |
| Shipping Weight: ¹ | 900 kg (1984 lbs) |
| Conveyor Speed: | 23 cm/s (45 ft/min) Forward or Reverse |
| Conveyor Height: | 73 cm (28.8") from Floor |
| Conveyor Capacity: | 165 kg (364 lbs) Evenly Distributed Load |

TECHNICAL

| | |
|---------------------------------|---------------------------------|
| Wire Resolution: | 40 AWG Typical, 38 AWG Standard |
| Steel Penetration: ² | 39 mm Typical, 37 mm Standard |

X-RAY GENERATOR & IMAGE PERFORMANCE

| | |
|-----------------|---|
| Voltage: | 180kV, Operating at 170kV |
| Tube Current: | 1.2 mA |
| Cooling: | Sealed Di-Electric bath with Forced Air |
| Duty Cycle: | 100%, No Warm-Up Procedure Required |
| Beam Direction: | Diagonally Upward |

COMPUTER & VIDEO

| | |
|---------------------|--|
| Platform: | Windows® OS |
| Memory: | 16 GB RAM |
| Storage Capacity: | 1TB HDD, 512 GB SSD |
| Power Conditioner: | Automatic Voltage Regulator (AVR), 600VA |
| Display Type: | 23" Touchscreen Interface |
| Display Resolution: | 1920 x 1080; 24 Bit/Pixel Color |

ENVIRONMENTAL

| | |
|------------------------|-------------------------------|
| Operating Temperature: | 0°C to 40°C / 32°F to 104°F |
| Storage Temperature: | -20°C to 60°C / -4°F to 140°F |
| Humidity: | Up to 95% Non-Condensing |

ELECTRICAL

| | |
|---------------|--|
| System Power: | 110 VAC +/- 10% 50/60Hz, 15 Amp Max 220 VAC +/- 10% 50/60Hz, 10 Amp Max |
|---------------|--|

HEALTH & SAFETY

Film Safety: Guaranteed up to ISO 1600 (33) DIN)

Compliant with USFDA Center for Devices and Radiation Health Standards for Cabinet X-Ray Systems (21-CFR 1020.40)

Typical radiation leakage is less than 0.1 mR/hr
(Leakage less than 0.5 mR/hr permitted by U.S. Federal Standards)

STANDARD FEATURES

| | | |
|---------------------------------------|-----------------------------|---------------------------|
| Adjustable Mobile Stand | Atomic Z-Number Measurement | Multi-Tier Accessibility |
| 3D MotionView™ Software | Material Discrimination | Network Ready |
| Black/White Imaging | 9 Quadrant Zoom | Real-Time Self Diagnostic |
| Color Imaging | Continuous Scanning | Baggage Counter |
| Geometric Image Distortion Correction | Continuous Zoom Up to 64x | External USB Ports |
| High Penetration Function | Vertical Zoom Panning | |
| Organic/Inorganic Imaging | Auto Image Archiving | |
| Pseudo Color | Image Review | |
| Real-Time Image Manipulation | Save Image (RGB) | |
| Reverse Monochrome | | |

OPTIONAL FEATURES³

| |
|------------------------------------|
| Barcode Scanning |
| Enhanced Imaging Mode |
| Local Language |
| Test Case |
| Custom Paint |
| Environmental Kit |
| Radiation Meter |
| Remote Workstation Configuration |
| Uninterruptible Power Supply (UPS) |
| Conveyor Capacity Load Increase |
| Variable Conveyor Speed |



| | |
|--|--|
| Astrophysics HQ +1.909.598.5488 | Astrophysics - INDIA +91.11.41709990 |
| Astrophysics - EMEA +961.9.832.500/1/2 | Astrophysics - ASIA +63.2.812.0033 |

ISO 9001 & ISO 14001: Certified

¹Weight and dimensions of the system may vary depending on customization.
²As tested on Astrophysics Inc. Test Piece.
³Optional Features may affect lead time, price, and weight of product.
 Please contact your Astrophysics Sales Representative for more information.

Due to continued product research and development, Astrophysics Inc. reserves the right to amend all technical specifications without prior notice. Contact sales@astrophysicsinc.com for the most updated brochures.